

KEEP IT DRY



# PX3-15-150

- 15kW
- 150mm
- Prime Vacuum Assisted
- Electric Driven Package
- Transportable Canopy Package

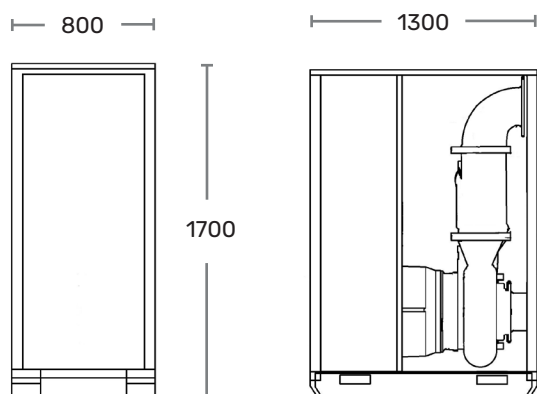
**RH PUMPER A/S** ▪ Stenrøjlervej 1 ▪ 4200 Slagelse  
**RH PUMPER AB** ▪ Box 100 ▪ SE 311 21 Falkenberg  
Tlf. +45 5850 6065 ▪ info@rhpumper.dk

[WWW.RHPUMPER.DK](http://WWW.RHPUMPER.DK)

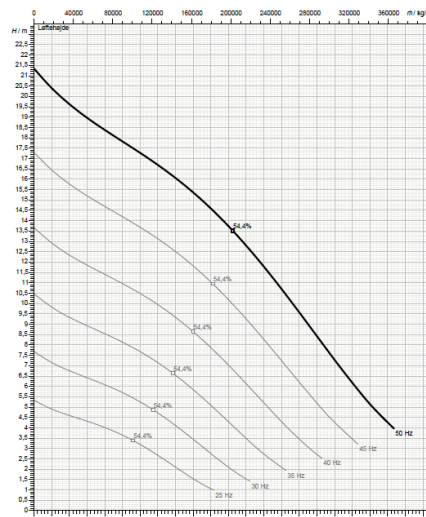


ISO 14001 ▪ ISO 45001 ▪ DS 21001

## Mechanical drawing



## Performance curve



### SPECIFICATIONS

Suction Connection	150 mm
Delivery Connection	150 mm
Max Flow	360 m <sup>3</sup> /h
Max Head	21,4 m
Solids Size	100 mm
Max Speed	1444 rpm
Rated Power BEP	15 kW
Sound Rating	65 dB 7 metres
L x W x H (mm)	1300 x 800 x 1700
Weight	980 kg

### PRIME SYSTEM

#### Priming System

Mechanically Driven Vacuum Pump

#### Air Removal Capacity

50CFM

#### Priming Chamber

Single chamber with positive sealing air separation  
PosiValve™ with stainless steel float ball & linkage.

#### Discharge Check Valve

Swing Style - ductile iron with Buna-n Disc completely dry without damage

### FEATURES

- Indefinite Run-Dry Capability
- Efficient Design for Reduced Operating Costs
- Auto Stop/Start with floats/pressure transmitter
- Pump controller with Sim card for SRO monitoring
- Environmentally Safe Priming System with Patented PosiValve™ - No Blow By
- VFD controller

### MOTOR SPECIFICATIONS

Cos Phi 0,86  
15 kW 400V 29A

High Efficient Electrical motor  
Safety Shutdown Switches High Temperature

### APPLICATIONS

Raw Water Pumps  
Dirty Water  
Cooling Pumps

Flood pumps  
Sewage Bypass  
ByPass

Mine Dewatering  
Flushing  
Process water

### OTHER SPECIFICATIONS

- Channel or vortex Impeller
- Fully welded and galvanized Frame
- Fork lifting pockets
- Oversized stainless steel shaft AISI 420
- Individual setup
- Large solids handling capability
- Run dry double tandem mechanical seal
- Connections Bauer and parrot
- Auto Start/stop control panel with VLT inverter
- Lifting pockets
- Lifting eyes on top
- Ductile iron GS500 impeller
- Telemetry monitoring
- 24/7 live data

### CONSTRUCTION MATERIALS

#### STANDARD

#### OPTION

Impeller  
Volute  
Wear Ring  
Suction Cover  
Bracket  
Backplate

Ductile  
Ductile Iron  
CD4MCu-316 SS  
Ductile Iron  
Ductile Iron  
Ductile Iron

Stainless steel/duplex  
Stainless steel/duplex  
CD4MCu-316 SS  
Stainless steel/duplex  
Stainless steel/duplex  
Stainless steel/duplex